



MANUFACTURER OF PLASTIC
HOUSINGS FOR ELECTRONICS



PRODUCT CATALOGUE

www.kradex.com.pl





NEW KRADEX PREMISES

Since 1 January 2022, a new facility with an area of 2000 m² was put into service. Thus, production has now ceased at Naddnie-przańska 32 in Warsaw. Our new address is: Minerska 4, Warsaw.

Kradex

Manufacturer of plastic housings for electronics

We have been a Polish manufacturer of plastic housings for electronics since 1985. Our products have been distributed to over 2,500 customers in Poland and around the world. Products from our wide-ranging catalogue are, as standard, made of ABS for the professional line, PS for the economy line or PC for the Waterproofer line, among others. The housings are most often in the following colours: black, light grey and white. The offer includes such types of housings as: two-part, with side panels, modular for DIN rail, with battery basket and with lid IP54. Hermetically sealed housings have IP65 and IK09 certification, while the cast gasket category has IP67 certification. In 2016, Kradex obtained the ISO 9001 certificate for the introduction of all the necessary management systems, confirming its quality. On the plant's premises are storage facilities with a total area of over 1500 m², ensuring the maintenance of high stock levels.



Scan and watch a video about us



ZM SERIES HOUSINGS



ZM SERIES HOUSINGS



can be mounted on
poles by means of
triangles



wall mountable



IoT applications
possible



possibility to
mount a membrane
keyboard



wide range
of colors



dedicated
accessories



CUSTOMISED HOUSINGS

INDIVIDUAL ORDERS
FROM DESIGN TO MASS PRODUCTION

Our specialists, after familiarising themselves with the customer's requirements, draw up a design for the new housing, make a 3D model and prepare an injection mould for production. The buyer also has the possibility of choosing the material and colour of the future product.

We use high-quality machines, such as:

Hole drilling EDM:

- Mitsubishi EA12S
- Accutex HD75
- Accutex AM32N2

Wire cutting WEDM:

- Mitsubishi MV2400S
- Accutex AU-300IA

3D printers:

- Zortrax M200



OTHER SERVICES

The services department is the perfect complement for all those customers who require an individual approach to housings. Our products are easily customised which makes them an excellent choice for pre-made housings from the catalogue.

Our offer includes, among others:

- printing
- additional mounting posts
- assembly services
- varnishing
- EMC shielding
- fronts, labels, rating plates, membrane keypads
- mounting plates, DIN rails





HOUSING MILLING

We do utility hole milling, facing or threading according to the customer's specifications. 0.2 mm accuracy is achieved thanks to modern machinery, using the latest CAD/CAM software as well as top-grade milling cutters. We mill housings if the order includes at least 50 pieces, but it is also possible to make a single prototype of a milled housing.

Each housing, either from the catalogue or made to order, can have all the most popular utility holes.



Machining of materials such as: steel, aluminium, copper and brass is done with these machines:

DMG Mori 1100 ecomill
HAAS VF1
HAAS VF2

Machining of plastics such as: ABS, PC, PS.



- PS polystyrene
- ABS flammable ABS
- ABS VO self-extinguishing ABS
- PC polycarbonate
- W ventilated housing
- H housing hermetically sealed with silicone gasket

- S housing hermetically sealed with cast gasket
- U housing with mounting ears
- TM brass sleeves
- A,B,C types of housing
- () the dimensions in parentheses are inclusive of the mounting ears/flanges



- black
RAL 9005
- pure white
od RAL 9003 do RAL 9016
- light grey
RAL 7035
- transparent
- blue
- red

On request, we can produce housings in other materials and colours from the RAL palette in the amount of min. 500-1000 pieces, depending on the housing dimensions.



ZM110.70.33
MATERIAL:
ABS
FOR WALL MOUNTING
H / W / L [mm]:
33 / 70 / 110
AVAILABLE COLOURS:
[] [] []



ZM125.75.33
MATERIAL:
ABS
FOR WALL MOUNTING
H / W / L [mm]:
33 / 75 / 125
AVAILABLE COLOURS:
[] [] []



ZM135.95.33
MATERIAL:
ABS
FOR WALL MOUNTING
H / W / L [mm]:
33 / 95 / 135
AVAILABLE COLOURS:
[] [] []



ZM150.100.33
MATERIAL:
ABS
FOR WALL MOUNTING
H / W / L [mm]:
33 / 100 / 150
AVAILABLE COLOURS:
[] [] []

ACCESSORIES FOR ZM125.75.33

Caps ZM Cap





ZM SERIES HOUSINGS

ZM series enclosures can be used for various applications such as IOT, smart home or access control solutions. The enclosure features two baffles that separate the electronics from the mounting screws. This solution makes it possible to mount the enclosure without opening it, e.g. when using a seal. The enclosure can be attached to the pipe with cable ties through four rectangular holes.



can be mounted on poles by means of triangles



wall mountable



possible application in IoT



possibility to mount a membrane keyboard



wide range of colors



dedicated accessories



ZM110.70.33
MATERIAL:
ABS
FOR WALL MOUNTING
H / W / L (mm):
33 / 70 / 110
AVAILABLE COLOURS:
■ ■ ■



ZM125.75.33
MATERIAL:
ABS
FOR WALL MOUNTING
H / W / L (mm):
33 / 75 / 125
AVAILABLE COLOURS:
■ ■ ■



ZM135.95.33
MATERIAL:
ABS
FOR WALL MOUNTING
H / W / L (mm):
33 / 95 / 135
AVAILABLE COLOURS:
■ ■ ■



ZM150.100.33
MATERIAL:
ABS
FOR WALL MOUNTING
H / W / L (mm):
33 / 100 / 150
AVAILABLE COLOURS:
■ ■ ■

*other products and accessories from the same series coming soon



22 injection
moulding machines



processing capacity of
approx. **40,000**
cases per day



handling even very
large orders



UNIVERSAL HOUSINGS

Universal housings are made of polystyrene for those for whom price is of key importance. Several dozen of our housings have been well-established on the Polish market since the 1980s. This allows the price of the final product to be reduced.

In the production of our universal catalogue housings, we use the following materials:

PS

PS polystyrene

ABS

Standard ABS



ABS
V0

Self-extinguishing ABS V0

PROFESSIONAL LINE

The professional line encompasses products made of ABS. The high quality of the raw material used guarantees a higher class of product, which includes the housings in this line. The solution for big-budget and more demanding projects.

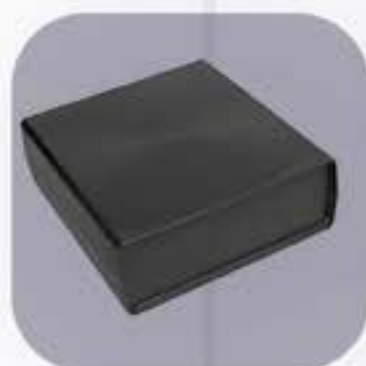
ABS

Standard ABS

ABS
V0

Self-extinguishing ABS V0





Z1
MATERIAL:
PS/ABS
H / W / L (mm):
70 / 188 / 197
WITH SIDE PANELS
AVAILABLE COLOURS:



Z1W
MATERIAL:
PS/ABS
H / W / L (mm):
70 / 188 / 197
WITH SIDE PANELS
AVAILABLE COLOURS:



Z1AW
MATERIAL:
PS/ABS
H / W / L (mm):
68 / 172 / 176
WITH SIDE PANELS
AVAILABLE COLOURS:



Z2
MATERIAL:
PS/ABS
H / W / L (mm):
70 / 150 / 179
WITH SIDE PANELS
AVAILABLE COLOURS:



Z2AW
MATERIAL:
PS/ABS
H / W / L (mm):
90 / 147 / 178
WITH SIDE PANELS
AVAILABLE COLOURS:



Z2W
MATERIAL:
PS/ABS
H / W / L (mm):
70,6 / 150 / 179
WITH SIDE PANELS
AVAILABLE COLOURS:



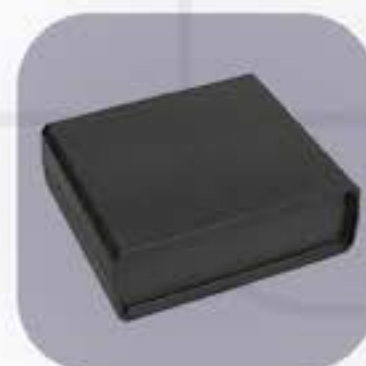
Z3
MATERIAL:
PS/ABS
H / W / L (mm):
70 / 110 / 150
WITH SIDE PANELS
AVAILABLE COLOURS:



Z3AW
MATERIAL:
PS/ABS
H / W / L (mm):
68 / 90 / 110
WITH SIDE PANELS
AVAILABLE COLOURS:



Z3W
MATERIAL:
PS/ABS
H / W / L (mm):
70 / 110 / 150
WITH SIDE PANELS
AVAILABLE COLOURS:



Z4
MATERIAL:
PS/ABS
H / W / L (mm):
50 / 129,6 / 149,3
WITH SIDE PANELS
AVAILABLE COLOURS:



Z4A
MATERIAL:
PS/ABS
H / W / L (mm):
59 / 139 / 150
WITH SIDE PANELS
AVAILABLE COLOURS:



Z4W
MATERIAL:
PS/ABS
H / W / L (mm):
50 / 129,6 / 140,3
WITH SIDE PANELS
AVAILABLE COLOURS:



Z4AW
MATERIAL:
PS/ABS
H / W / L (mm):
59 / 139 / 159
WITH SIDE PANELS
AVAILABLE COLOURS:



Z5
MATERIAL:
PS/ABS
H / W / L (mm):
40 / 90 / 150
WITH SIDE PANELS
AVAILABLE COLOURS:



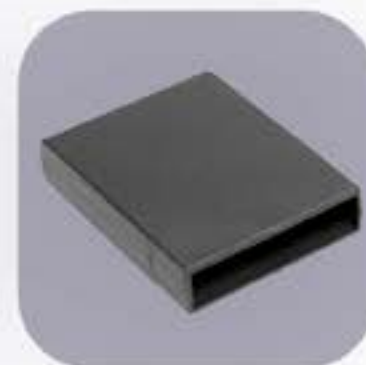
Z5A
MATERIAL:
PS/ABS
H / W / L (mm):
49 / 90 / 150
WITH SIDE PANELS
AVAILABLE COLOURS:



Z5B
MATERIAL:
PS/ABS
H / W / L (mm):
49 / 90,1 / 260
WITH SIDE PANELS
AVAILABLE COLOURS:



Z6
MATERIAL:
PS/ABS
H / W / L (mm):
39 / 66 / 100
WITH SIDE PANELS
AVAILABLE COLOURS:



Z7
MATERIAL:
PS/ABS
H / W / L (mm):
19 / 68 / 150
WITH SIDE PANELS
AVAILABLE COLOURS:





Z7A
MATERIAL:
ABS
H / W / L (mm):
31,4 / 54,3 / 105,4
TWO-PART
AVAILABLE COLOURS:



Z7B
MATERIAL:
ABS
H / W / L (mm):
23,5 / 55 / 106
TWO-PART
AVAILABLE COLOURS:



Z7C
MATERIAL:
ABS
H / W / L (mm):
40 / 55 / 82
TWO-PART
AVAILABLE COLOURS:



Z8A
MATERIAL:
ABS
H / W / L (mm):
34,7 / 36,7 / 70,3
WITH COVER
AVAILABLE COLOURS:



Z8U
MATERIAL:
ABS
H / W / L (mm):
35 / 50 / 70
WITH COVER
AVAILABLE COLOURS:



Z9U
MATERIAL:
ABS
H / W / L (mm):
25,5 / 33,8 / 62,3
WITH COVER
AVAILABLE COLOURS:



Z9WU
MATERIAL:
ABS
H / W / L (mm):
25,5 / 33,8 / 62,3 (81,2)
WITH COVER
AVAILABLE COLOURS:



Z10
MATERIAL:
ABS
H / W / L (mm):
52 / 58 / 72
FOR POWER SUPPLIES
AVAILABLE COLOURS:



Z10A
MATERIAL:
ABS
H / W / L (mm):
46 / 53 / 81
FOR POWER SUPPLIES
AVAILABLE COLOURS:



Z13
MATERIAL:
ABS
H / W / L (mm):
37 / 47 / 10
FOR POWER SUPPLIES
AVAILABLE COLOURS:



Z13A
MATERIAL:
ABS
H / W / L (mm):
40 / 48 / 72
FOR POWER SUPPLIES
AVAILABLE COLOURS:



Z14
MATERIAL:
ABS
H / W / L (mm):
22,7 / 49,2 / 149,5
FOR REMOTE CONTROLS
AVAILABLE COLOURS:



Z14A
MATERIAL:
ABS
H / W / L (mm):
13 / 31 / 61
FOR REMOTE CONTROLS
AVAILABLE COLOURS:



Z15
MATERIAL:
ABS
H / W / L (mm):
90 / 148 / 250
WITH SIDE PANELS
AVAILABLE COLOURS:



Z16
MATERIAL:
ABS
H / W / L (mm):
63 (67,95) / 70 / 114 (149,8)
FOR POWER SUPPLIES
AVAILABLE COLOURS:



Z17W
MATERIAL:
PS
H / W / L (mm):
92 / 217 / 235
WITH SIDE PANELS
AVAILABLE COLOURS:



Z18
MATERIAL:
ABS
H / W / L (mm):
65 / 76 / 176
WITH SIDE PANELS
AVAILABLE COLOURS:



Z19
MATERIAL:
ABS
H / W / L (mm):
25 / 94 / 128
WITH SIDE PANELS
AVAILABLE COLOURS:



Z20
MATERIAL:
PS/ABS
H / W / L [mm]:
53,9 / 120,4 / 126,1
TWO-PART
AVAILABLE COLOURS:
■



Z20A
MATERIAL:
PS/ABS
H / W / L [mm]:
59 / 138 / 190
TWO-PART
AVAILABLE COLOURS:
■



Z21
MATERIAL:
PS/ABS
H / W / L [mm]:
55 / 64 / 82
FOR POWER SUPPLIES
AVAILABLE COLOURS:
■



Z23
MATERIAL:
PS/ABS
H / W / L [mm]:
30 / 59 / 84
TWO-PART
AVAILABLE COLOURS:
■



Z23B
MATERIAL:
PS/ABS
H / W / L [mm]:
38 / 59 / 84
TWO-PART
AVAILABLE COLOURS:
■



Z23U
MATERIAL:
PS/ABS
H / W / L [mm]:
23,4 / 59,5 / 84,9 (106,7)
FOR POWER SUPPLIES
AVAILABLE COLOURS:
■



Z23A
MATERIAL:
PS/ABS
H / W / L [mm]:
22 / 59 / 84
TWO-PART
AVAILABLE COLOURS:
■



Z23AU
MATERIAL:
PS/ABS
H / W / L [mm]:
16,45 / 59,55 / 84,6 (106,7)
TWO-PART
AVAILABLE COLOURS:
■



Z24
MATERIAL:
PS/ABS
H / W / L [mm]:
37,7 / 47,3 / 66,4
TWO-PART
AVAILABLE COLOURS:
■



Z24A
MATERIAL:
PS/ABS
H / W / L [mm]:
24 / 47 / 66
TWO-PART
AVAILABLE COLOURS:
■



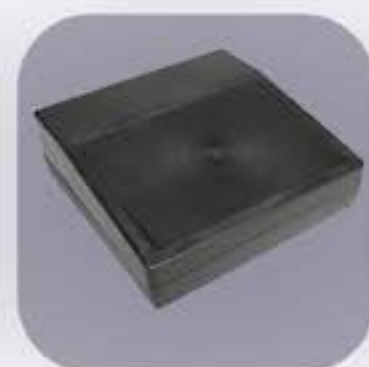
Z24AU
MATERIAL:
PS/ABS
H / W / L [mm]:
15,9 / 48,85 (66,95) / 66,2
TWO-PART
AVAILABLE COLOURS:
■



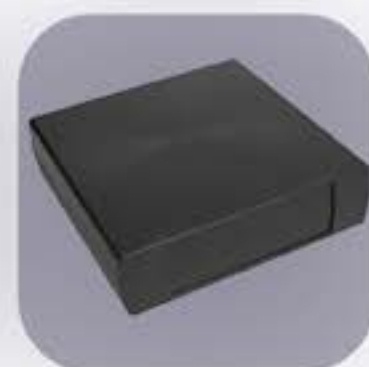
Z24U
MATERIAL:
PS/ABS
H / W / L [mm]:
30 / 48 / 66
TWO-PART
AVAILABLE COLOURS:
■



Z24B
MATERIAL:
PS/ABS
H / W / L [mm]:
52 / 47 / 66
TWO-PART
AVAILABLE COLOURS:
■



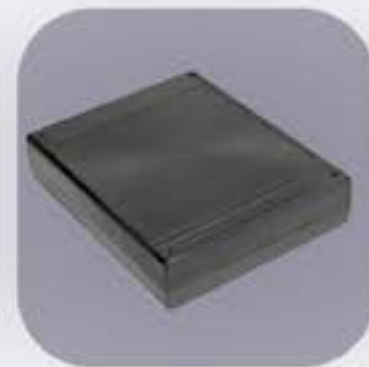
Z25
MATERIAL:
PS
H / W / L [mm]:
78 / 220 / 220
WITH SIDE PANELS
AVAILABLE COLOURS:
■



Z26
MATERIAL:
PS
H / W / L [mm]:
60 / 220 / 220
WITH SIDE PANELS
AVAILABLE COLOURS:
■



Z27
MATERIAL:
PS/ABS
H / W / L [mm]:
46 / 70 / 120
FOR POWER SUPPLIES
AVAILABLE COLOURS:
■



Z28
MATERIAL:
PS/ABS
H / W / L [mm]:
32 (37,85) / 119 / 143
TWO-PART
AVAILABLE COLOURS:
■



Z29
MATERIAL:
PS/ABS
H / W / L [mm]:
29 (30,6) / 98,5 / 132,5
TWO-PART
AVAILABLE COLOURS:
■



Z30
MATERIAL:
PS/ABS
H / W / L (mm):
45,3 / 70,9 / 120,5
FOR POWER SUPPLIES
AVAILABLE COLOURS:



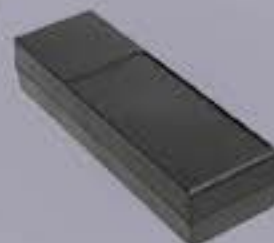
Z30A
MATERIAL:
PS/ABS
H / W / L (mm):
44 / 70 / 120
TWO-PART
AVAILABLE COLOURS:



Z31
MATERIAL:
PS/ABS
H / W / L (mm):
44 / 70 / 120
TWO-PART
AVAILABLE COLOURS:



Z32A
MATERIAL:
PS/ABS
H / W / L (mm):
26 / 59 / 188
WITH SPACE FOR A BATTERY
AVAILABLE COLOURS:



Z32B
MATERIAL:
PS/ABS
H / W / L (mm):
38,4 / 60 / 188,5
WITH SPACE FOR A BATTERY
AVAILABLE COLOURS:



Z32
MATERIAL:
PS/ABS
H / W / L (mm):
27 / 66,3 / 110,6
WITH SPACE FOR A BATTERY
AVAILABLE COLOURS:



Z33A
MATERIAL:
PS/ABS
H / W / L (mm):
46 / 140 / 190
FOR POWER SUPPLIES
AVAILABLE COLOURS:



Z33B
MATERIAL:
PS/ABS
H / W / L (mm):
46 / 140 / 190
TWO-PART
AVAILABLE COLOURS:



Z33
MATERIAL:
PS/ABS
H / W / L (mm):
46 (52,35) / 140 / 190
TWO-PART
AVAILABLE COLOURS:



Z34A
MATERIAL:
PS/ABS
H / W / L (mm):
28,2 / 67,6 / 129,3
TWO-PART
AVAILABLE COLOURS:



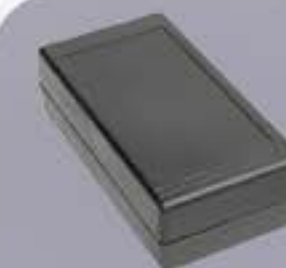
Z34AU
MATERIAL:
PS/ABS
H / W / L (mm):
15 / 68 / 129
TWO-PART
AVAILABLE COLOURS:



Z34
MATERIAL:
PS/ABS
H / W / L (mm):
25,3 / 67,55 / 129,2
TWO-PART
AVAILABLE COLOURS:



Z34U
MATERIAL:
PS/ABS
H / W / L (mm):
24 / 68 / 129
TWO-PART
AVAILABLE COLOURS:



Z34B
MATERIAL:
PS/ABS
H / W / L (mm):
37,7 / 67,7 / 129,2
TWO-PART
AVAILABLE COLOURS:



Z35
MATERIAL:
PS/ABS
H / W / L (mm):
52 / 62 / 85
FOR POWER SUPPLIES
AVAILABLE COLOURS:



Z36
MATERIAL:
PS/ABS
H / W / L (mm):
42 / 66 / 125
WITH SIDE PANELS
AVAILABLE COLOURS:



Z37
MATERIAL:
PS/ABS
H / W / L (mm):
48 (52,45) / 128 / 258
WITH SIDE PANELS
AVAILABLE COLOURS:



Z38
MATERIAL:
PS/ABS
H / W / L (mm):
36 / 54,8 / 169,7
TWO-PART
AVAILABLE COLOURS:



Z39W
MATERIAL:
PS
H / W / L [mm]:
119,6 / 218,2 / 296,8
WITH SIDE PANELS
AVAILABLE COLOURS
■



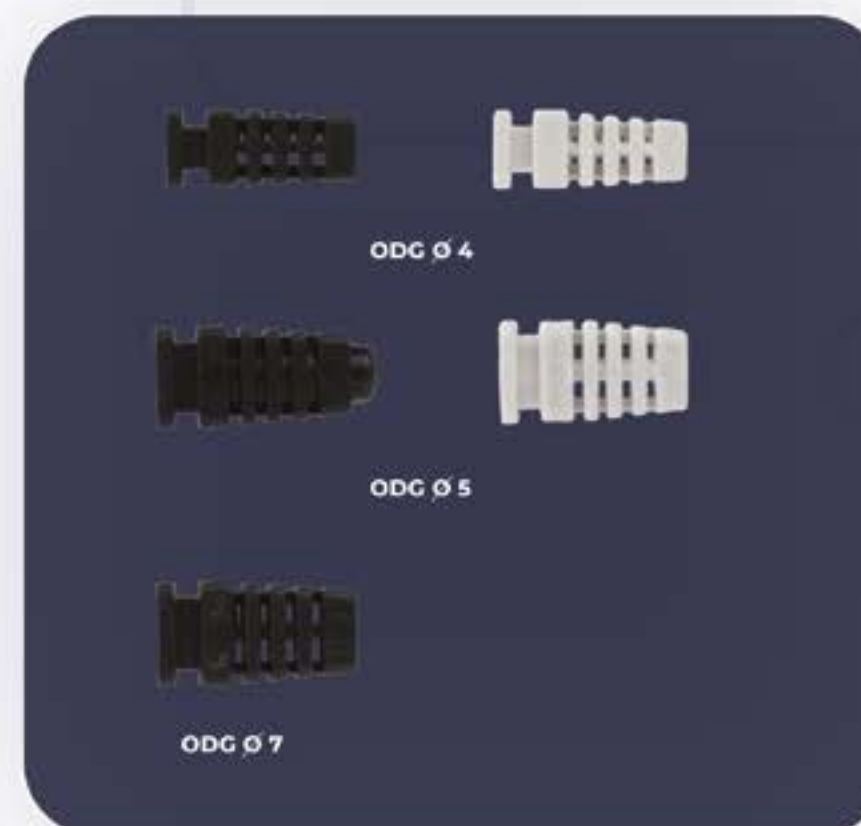
Z40W
MATERIAL:
ABS
H / W / L [mm]:
79,7 / 100 / 179,4
WITH SIDE PANELS
AVAILABLE COLOURS
■



Z42
MATERIAL:
ABS
H / W / L [mm]:
46 / 56 / 83
FOR POWER SUPPLIES
AVAILABLE COLOURS
■

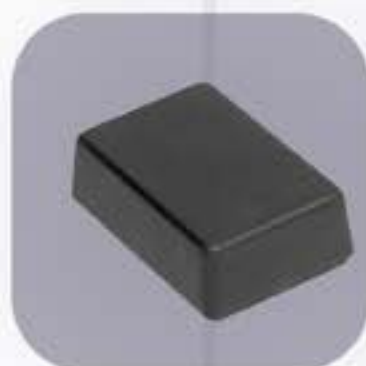
ACCESSORIES FOR UNIVERSAL HOUSINGS

Bend protector for universal housings



Foot for universal housings





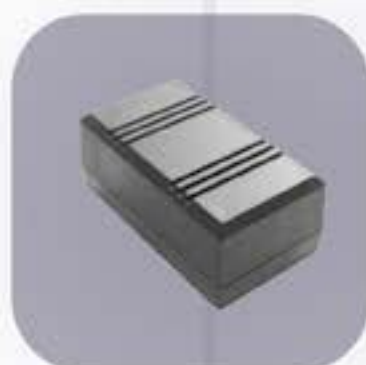
Z43
MATERIAL:
ABS
WITH COVER
H / W / L (mm):
16 / 31 / 46
AVAILABLE COLOURS:
■ ■



Z44
MATERIAL:
ABS WITH SPACE
FOR DISPLAY
H / W / L (mm):
33,1 / 79,9 / 149,3
AVAILABLE COLOURS:
■ ■



Z45
MATERIAL:
ABS
TWO-PART
H / W / L (mm):
43,3 / 56,1 / 99,8
AVAILABLE COLOURS:
■ ■



Z45W
MATERIAL:
ABS
TWO-PART
H / W / L (mm):
43,3 / 56,1 / 99,8
AVAILABLE COLOURS:
■ ■



Z47U
MATERIAL:
ABS
TWO-PART
H / W / L (mm):
20,6 / 40,4 lub (59,8) / 50,2
AVAILABLE COLOURS:
■ ■



Z47
MATERIAL:
ABS
TWO-PART
H / W / L (mm):
20,6 / 40,4 / 50,2
AVAILABLE COLOURS:
■ ■



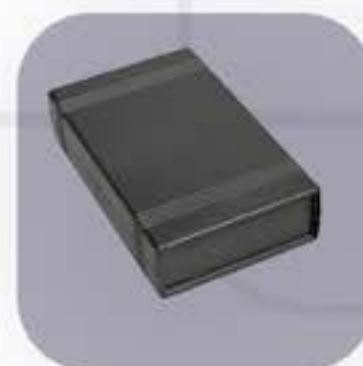
Z48
MATERIAL:
ABS
WITH SPACE FOR A BATTERY
H / W / L (mm):
35 / 80 / 145
AVAILABLE COLOURS:
■ ■



Z49
MATERIAL:
ABS
WITH SPACE FOR A BATTERY
H / W / L (mm):
35 / 80 / 145
AVAILABLE COLOURS:
■ ■



Z50
MATERIAL:
ABS
WITH SIDE PANELS
H / W / L (mm):
43,3 / 91 / 146
AVAILABLE COLOURS:
■ ■



Z50A
MATERIAL:
ABS
WITH SIDE PANELS
H / W / L (mm):
36,2 / 92,5 / 147,6
DOSTĘPNE KOLORY:
■ ■



Z50B
MATERIAL:
ABS
WITH SIDE PANELS
H / W / L (mm):
50,3 / 92,5 / 147,6
DOSTĘPNE KOLORY:
■ ■



Z51U
MATERIAL:
ABS
TWO-PART
H / W / L (mm):
27 / 49 / 155
DOSTĘPNE KOLORY:
■ ■



Z52U
MATERIAL:
ABS
TWO-PART
H / W / L (mm):
40 / 74 / 145
DOSTĘPNE KOLORY:
■ ■



Z53U
MATERIAL:
ABS
TWO-PART
H / W / L (mm):
22 / 65 / 90
DOSTĘPNE KOLORY:
■ ■



Z55
MATERIAL:
ABS
WITH SPACE FOR A BATTERY
H / W / L (mm):
28 / 63 / 104
DOSTĘPNE KOLORY:
■ ■



Z60
MATERIAL:
ABS
WITH SIDE PANELS
H / W / L (mm):
36 / 68 / 74
DOSTĘPNE KOLORY:
■ ■



Z61
MATERIAL:
ABS
H / W / L (mm):
43 / 80 / 120
DOSTĘPNE KOLORY:
■ ■



Z62
MATERIAL:
ABS
TWO-PART
H / W / L (mm):
29 / 63 / 83
DOSTĘPNE KOLORY:
■ ■



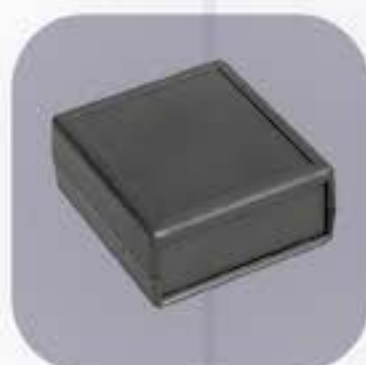
Z63
MATERIAL:
ABS
H / W / L [mm]:
15 / 17 / 26
WITH COVER
AVAILABLE COLOURS:
■



Z64
MATERIAL:
ABS
H / W / L [mm]:
57 / 65 / 89
FOR POWER SUPPLIES
AVAILABLE COLOURS:
■



Z66
MATERIAL:
ABS
H / W / L [mm]:
65 (71,15) / 79 / 130 (167,25)
FOR POWER SUPPLIES
AVAILABLE COLOURS:
■



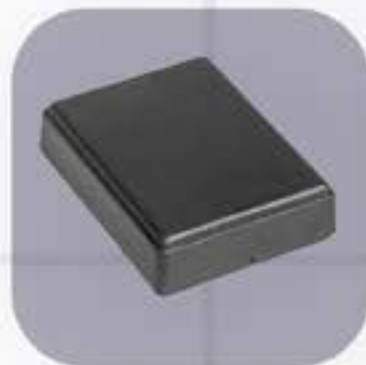
Z67
MATERIAL:
ABS
H / W / L [mm]:
29,1 / 63,3 / 69,3
WITH SIDE PANELS
AVAILABLE COLOURS:
■



Z68
MATERIAL:
ABS
H / W / L [mm]:
28 / 49 / 66
TWO-PART
AVAILABLE COLOURS:
■



Z68U
MATERIAL:
ABS
H / W / L [mm]:
28 / 49 / 66
TWO-PART
AVAILABLE COLOURS:
■



Z69
MATERIAL:
ABS
H / W / L [mm]:
17,7 / 49,5 / 64,5
TWO-PART
AVAILABLE COLOURS:
■



Z69U
MATERIAL:
ABS
H / W / L [mm]:
17,7 / 49,5 (68,8) / 64,5
TWO-PART
AVAILABLE COLOURS:
■



Z70
MATERIAL:
ABS
H / W / L [mm]:
27,9 / 58,8 / 75,9
TWO-PART
AVAILABLE COLOURS:
■



Z70U
MATERIAL:
ABS
H / W / L [mm]:
29,7 / 58,8 (77,95) / 75,9
TWO-PART
AVAILABLE COLOURS:
■



Z71
MATERIAL:
ABS
H / W / L [mm]:
18,1 / 59,4 / 76,5
TWO-PART
AVAILABLE COLOURS:
■



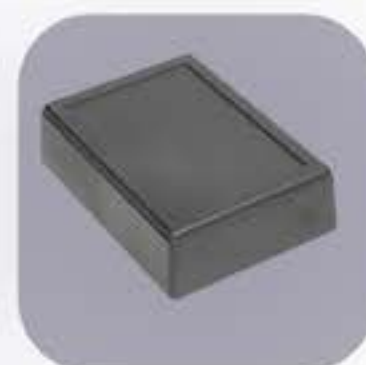
Z71U
MATERIAL:
ABS
H / W / L [mm]:
18,1 / 59,4 (77,95) / 76,5
TWO-PART
AVAILABLE COLOURS:
■



Z72
MATERIAL:
ABS
H / W / L [mm]:
48,8 / 101,5 / 177,9
TWO-PART
AVAILABLE COLOURS:
■



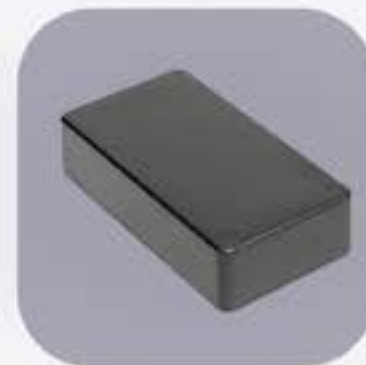
Z72U
MATERIAL:
ABS
H / W / L [mm]:
36,6 / 101,5 / 177,9 (199,7)
TWO-PART
AVAILABLE COLOURS:
■



Z73
MATERIAL:
ABS
H / W / L [mm]:
31,9 / 79,2 / 109,2
TWO-PART
AVAILABLE COLOURS:
■



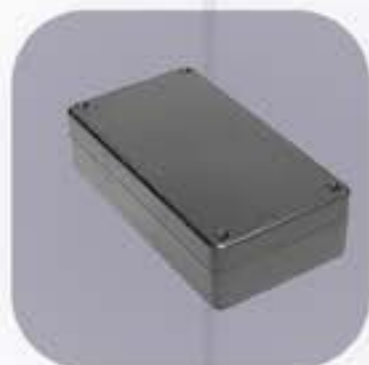
Z75
MATERIAL:
ABS
H / W / L [mm]:
23 / 45 / 95
TWO-PART
AVAILABLE COLOURS:
■



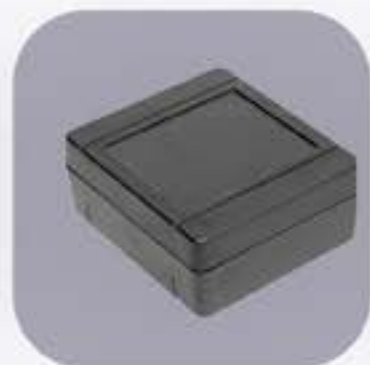
Z76
MATERIAL:
ABS
H / W / L [mm]:
28 / 59,5 / 109
TWO-PART
AVAILABLE COLOURS:
■



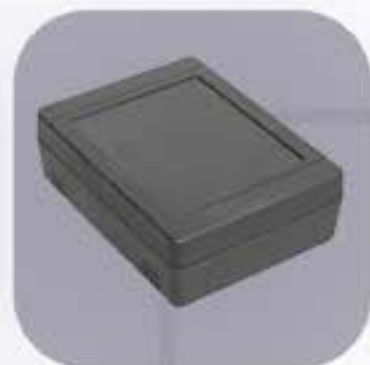
Z77
MATERIAL:
ABS
H / W / L [mm]:
38 / 71,5 / 124
TWO-PART
AVAILABLE COLOURS:
■



Z78
MATERIAL:
ABS
H / W / L [mm]:
42,5 / 84,5 / 154
TWO-PART
AVAILABLE COLOURS:
■



Z79
MATERIAL:
ABS
H / W / L [mm]:
38 / 80 / 90
TWO-PART
AVAILABLE COLOURS:
■



Z80
MATERIAL:
ABS
H / W / L [mm]:
38 / 90 / 120
TWO-PART
AVAILABLE COLOURS:
■



Z81
MATERIAL:
ABS
H / W / L [mm]:
14,6 / 16,3 / 20
WITH COVER
AVAILABLE COLOURS:
■



Z82
MATERIAL:
ABS
H / W / L [mm]:
16,5 / 22,1 / 22,2
WITH COVER
AVAILABLE COLOURS:
■



Z83
MATERIAL:
PS
H / W / L [mm]:
17,2 / 22 / 32
WITH COVER
AVAILABLE COLOURS:
■



Z84
MATERIAL:
ABS
H / W / L [mm]:
22,5 / 22 / 46
WITH COVER
AVAILABLE COLOURS:
■



Z85
MATERIAL:
ABS
H / W / L [mm]:
22 / 35,2 / 45,9
WITH COVER
AVAILABLE COLOURS:
■



Z86
MATERIAL:
ABS
H / W / L [mm]:
21,5 / 41,8 / 41,8
WITH COVER
AVAILABLE COLOURS:
■



Z87
MATERIAL:
ABS
H / W / L [mm]:
26 / 46 / 52
WITH COVER
AVAILABLE COLOURS:
■



Z89
MATERIAL:
ABS
H / W / L [mm]:
25 / 68,7 / 141,6
TWO-PART
AVAILABLE COLOURS:
■



Z91
MATERIAL:
ABS
H / W / L [mm]:
36,2 / 99,9 / 129,9
TWO-PART
AVAILABLE COLOURS:
■



Z92
MATERIAL:
ABS
H / W / L [mm]:
32 / 60,8 / 84,8
TWO-PART
AVAILABLE COLOURS:
■



Z93
MATERIAL:
ABS
H / W / L [mm]:
29 / 69,5 / 130,5
TWO-PART
AVAILABLE COLOURS:
■



Z94
MATERIAL:
ABS
H / W / L [mm]:
26,5 / 46,5 / 65,5
TWO-PART
AVAILABLE COLOURS:
■



Z94W
MATERIAL:
ABS
H / W / L [mm]:
26,5 / 46,5 / 65,5
TWO-PART
AVAILABLE COLOURS:
■



Z97
MATERIAL:
ABS
H / W / L [mm]:
31,1 / 60,7 / 10,8
WITH SIDE PANELS
AVAILABLE COLOURS:
■



Z98
MATERIAL:
ABS
H / W / L [mm]:
40,2 / 60,7 / 120,8
WITH SIDE PANELS
AVAILABLE COLOURS:
■



Z99
MATERIAL:
ABS
H / W / L (mm):
51,5 / 60,7 / 120,8
WITH SIDE PANELS
AVAILABLE COLOURS:
■ ■



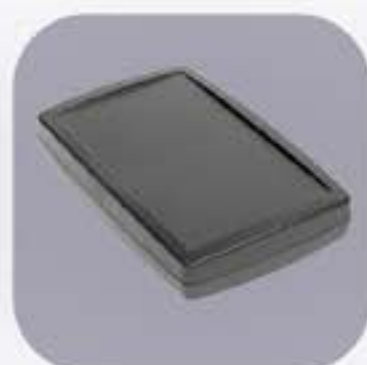
Z112A
MATERIAL:
ABS
H / W / L (mm):
40 / 135 / 185,5
WITH SIDE PANELS
AVAILABLE COLOURS:
■ ■



Z112B
MATERIAL:
ABS
H / W / L (mm):
80 / 136 / 185,5
WITH SIDE PANELS
AVAILABLE COLOURS:
■ ■



Z112
MATERIAL:
ABS
H / W / L (mm):
60 / 136 / 185,5
WITH SIDE PANELS
AVAILABLE COLOURS:
■ ■



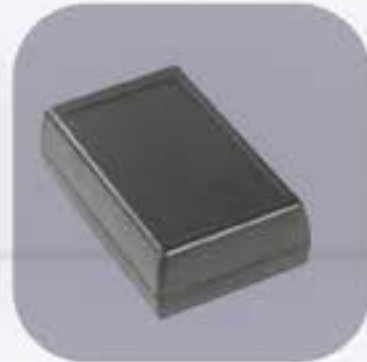
Z113
MATERIAL:
ABS
H / W / L (mm):
25,5 / 93,1 / 151
TWO-PART
AVAILABLE COLOURS:
■ ■



Z115
MATERIAL:
ABS
H / W / L (mm):
21 / 30 / 105
TWO-PART
AVAILABLE COLOURS:
■



Z118
MATERIAL:
ABS
H / W / L (mm):
19 / 60 / 97
WITH COVER
AVAILABLE COLOURS:
■ ■



Z119
MATERIAL:
ABS
H / W / L (mm):
30 / 63 / 97
TWO-PART
AVAILABLE COLOURS:
■ ■



Z120
MATERIAL:
ABS
H / W / L (mm):
75,1 / 65 / 129,2
FOR POWER SUPPLIES
AVAILABLE COLOURS:
■ ■



Z121
MATERIAL:
ABS
H / W / L (mm):
24 / 51 / 149
FOR REMOTE CONTROLS
AVAILABLE COLOURS:
■ ■



Z122
MATERIAL:
ABS
H / W / L (mm):
24,5 / 69,2 / 108,1
TWO-PART
AVAILABLE COLOURS:
■ ■



Z122W
MATERIAL:
ABS
H / W / L (mm):
24,5 / 69,2 / 108,1
TWO-PART
AVAILABLE COLOURS:
■ ■



Z123
MATERIAL:
ABS
H / W / L (mm):
30,2 / 75,8 / 75,8
TWO-PART
AVAILABLE COLOURS:
■ ■ ■



Z123A
MATERIAL:
ABS
H / W / L (mm):
35,3 / 100 / 100
TWO-PART
AVAILABLE COLOURS:
■ ■ ■



Z125
MATERIAL:
ABS
H / W / L (mm):
50,5 / 89,8 / 189,9
TWO-PART
AVAILABLE COLOURS:
■



Z126
MATERIAL:
ABS
H / W / L (mm):
35,1 / 69,4 / 104,5
TWO-PART
AVAILABLE COLOURS:
■ ■



Z129
MATERIAL:
ABS
H / W / L (mm):
28,5 / 91,4 / 117,6
WITH A CLASP
AVAILABLE COLOURS:
■ ■ ■



Z130
MATERIAL:
ABS
H / W / L (mm):
27,2 / 31,5 / 56,5
TWO-PART
AVAILABLE COLOURS:
■ ■ ■



Z132
MATERIAL:
ABS
WITH SPACE FOR A BATTERY
H / W / L (mm):
13 / 35 / 65,5
AVAILABLE COLOURS:
■ ■ ■ ■ ■



*The Z132 is also available in mixed colors:
Blue, white buttons
White, blue buttons
Black, white buttons
White, black buttons



Follow our social media



HOUSINGS HERMETICALLY SEALED WITH A CAST GASKET

The covers for the ZP housings have an indentation for the membrane keypad and intuitive assembly without the need to drill the housing. The products have mounting clamps or ears that allow them to be attached to a flat surface.

FERMAPOR K-31 provides:



quicker and more accurate assembly without the need for laying and cutting a traditional gasket



long-time durability



very good insulation properties



high quality end product



more resilience to weather conditions



better vibration damping



gasket does not deform plastically nor are connection gaps created

ABS total grey
PC total light grey
PC light grey base,
transparent cover



Z46AS
MATERIAL:
ABS WITH FOAM
GASKET
H / W / L [mm]:
72,3 / 144,7 / 198,1
AVAILABLE COLOURS:
■ ■



Z46S
MATERIAL:
ABS WITH FOAM
GASKET
H / W / L [mm]:
52,6 / 144,6 / 197,8
AVAILABLE COLOURS:
■ ■



Z54S
MATERIAL:
ABS WITH FOAM
GASKET
H / W / L [mm]:
41 / 74,5 / 89,4
AVAILABLE COLOURS:
■ ■



Z56S
MATERIAL:
ABS WITH FOAM
GASKET
H / W / L [mm]:
41,7 / 64,3 / 88,2
AVAILABLE COLOURS:
■ ■



Z57S
MATERIAL:
ABS WITH FOAM
GASKET
H / W / L [mm]:
54,6 / 78,4 / 118,2
AVAILABLE COLOURS:
■ ■



Z58S
MATERIAL:
ABS WITH FOAM
GASKET
H / W / L [mm]:
54,9 / 82,2 / 158,2
AVAILABLE COLOURS:
■ ■



Z59S
MATERIAL:
ABS WITH FOAM
GASKET
H / W / L [mm]:
58,1 / 115,4 / 125,3
AVAILABLE COLOURS:
■ ■



Z74S
MATERIAL:
ABS WITH FOAM
GASKET
H / W / L [mm]:
55,7 (56,7) / 126 / 176,8
AVAILABLE COLOURS:
■ ■



Z90S
MATERIAL:
ABS WITH FOAM
GASKET
H / W / L [mm]:
79,8 (81,3) / 174,8 / 225
AVAILABLE COLOURS:
■ ■



Z95S
MATERIAL:
ABS WITH FOAM
GASKET
H / W / L [mm]:
95,5 (96,7) / 193,2 / 283
AVAILABLE COLOURS:
■ ■



Z96S
MATERIAL:
ABS WITH FOAM
GASKET
H / W / L [mm]:
36,8 / 50 / 70
AVAILABLE COLOURS:
■ ■



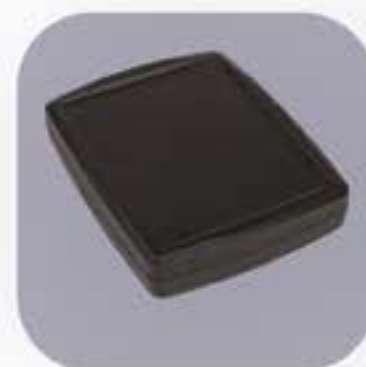
Z11S
MATERIAL:
ABS WITH FOAM
GASKET
H / W / L [mm]:
55 / 80 / 82
AVAILABLE COLOURS:
■ ■



Z116S
MATERIAL:
ABS WITH FOAM
GASKET
H / W / L [mm]:
36,2 / 48,9 / 51
AVAILABLE COLOURS:
■ ■



Z117S
MATERIAL:
ABS WITH FOAM
GASKET
H / W / L [mm]:
36,7 / 57,1 / 63,2
AVAILABLE COLOURS:
■ ■



Z124S
MATERIAL:
ABS WITH FOAM
GASKET
H / W / L [mm]:
38,5 / 144,6 / 184,7
AVAILABLE COLOURS:
■ ■ ■



Z128S
MATERIAL:
ABS WITH FOAM
GASKET
H / W / L [mm]:
40 / 70 / 105
AVAILABLE COLOURS:
■ ■



Z128SU
MATERIAL:
ABS WITH FOAM
GASKET
H / W / L [mm]:
40 / 70 / 105
AVAILABLE COLOURS:
■ ■

*The product certification process follows certain steps. Not all of the enclosures listed above have physical certification. Some may be in the certification process.



*The product certification process follows certain steps. Not all of the enclosures listed above have physical certification. Some may be in the certification process.





ZP45.45.40SU
MATERIAL:
ABS/ PC WITH FOAM
GASKET
H / W / L (mm):
40 / 45 / 45
AVAILABLE COLOURS:
■ ■



ZP60.60.40SU
MATERIAL:
ABS/ PC WITH FOAM
GASKET
H / W / L (mm):
40 / 60 / 60
AVAILABLE COLOURS:
■ ■



ZP90.60.40SU
MATERIAL:
ABS/ PC WITH FOAM
GASKET
H / W / L (mm):
39,9 / 61,3 / 90
AVAILABLE COLOURS:
■ ■



ZP90.90.45SU
MATERIAL:
ABS/ PC WITH FOAM
GASKET
H / W / L (mm):
45 / 90 / 90
AVAILABLE COLOURS:
■ ■



ZP90.90.60S
MATERIAL:
ABS/ PC WITH FOAM
GASKET
H / W / L (mm):
60,1 / 90 / 90
AVAILABLE COLOURS:
■ ■



ZP90.90.60SU
MATERIAL:
ABS/ PC WITH FOAM
GASKET
H / W / L (mm):
60,1 / 90 / 90
AVAILABLE COLOURS:
■ ■



ZP90.90.75S
MATERIAL:
ABS/ PC WITH FOAM
GASKET
H / W / L (mm):
75 / 90 / 90
AVAILABLE COLOURS:
■ ■



ZP105.105.60S
MATERIAL:
ABS/ PC WITH FOAM
GASKET
H / W / L (mm):
60,1 / 105 / 105
AVAILABLE COLOURS:
■ ■



ZP105.105.75S
MATERIAL:
ABS/ PC WITH FOAM
GASKET
H / W / L (mm):
67,6 / 105 / 105
AVAILABLE COLOURS:
■ ■



ZP120.120.60S
MATERIAL:
ABS/ PC WITH FOAM
GASKET
H / W / L (mm):
60,1 / 119,8 / 119,8
AVAILABLE COLOURS:
■ ■



ZP120.80.60S
MATERIAL:
ABS/ PC WITH FOAM
GASKET
H / W / L (mm):
60 / 120 / 120
AVAILABLE COLOURS:
■ ■



ZP120.80.60SU
MATERIAL:
ABS/ PC WITH FOAM
GASKET
H / W / L (mm):
60,2 / 81,6 / 121,4
AVAILABLE COLOURS:
■ ■



ZP120.80.45SU
MATERIAL:
ABS/ PC WITH FOAM
GASKET
H / W / L (mm):
45,2 / 81,6 / 121,4
AVAILABLE COLOURS:
■ ■



ZP120.80.75S
MATERIAL:
ABS/ PC WITH FOAM
GASKET
H / W / L (mm):
75 / 80 / 120
AVAILABLE COLOURS:
■ ■



ZP125.75.37S
MATERIAL:
ABS/ PC WITH FOAM
GASKET
H / W / L (mm):
37 / 75 / 125
AVAILABLE COLOURS:
■ ■



ZP135.135.60S
MATERIAL:
ABS/ PC WITH FOAM
GASKET
H / W / L (mm):
60,1 / 134,8 / 134,8
AVAILABLE COLOURS:
■ ■



ZP150.100.75S
MATERIAL:
ABS/ PC WITH FOAM
GASKET
H / W / L (mm):
75 / 100 / 150
AVAILABLE COLOURS:
■ ■



ZP150.100.45SU
MATERIAL:
ABS/ PC WITH FOAM
GASKET
H / W / L (mm):
40 / 100 / 150
AVAILABLE COLOURS:
■ ■

*The product certification process follows certain steps. Not all of the enclosures listed above have physical certification. Some may be in the certification process.

*The product certification process follows certain steps. Not all of the enclosures listed above have physical certification. Some may be in the certification process.



ZP150.100.60S
MATERIAL:
ABS/ PC WITH FOAM
GASKET
H / W / L [mm]:
60,1 / 100 / 150
AVAILABLE COLOURS:
■ ■



ZP150.100.60SU
MATERIAL:
ABS/ PC WITH FOAM
GASKET
H / W / L [mm]:
60,1 / 100 / 150
AVAILABLE COLOURS:
■ ■



ZP150.150.60S
MATERIAL:
ABS/ PC WITH FOAM
GASKET
H / W / L [mm]:
60,1 / 149,9 / 149,9
AVAILABLE COLOURS:
■ ■



ZP240.190.105S
MATERIAL:
ABS/ PC WITH FOAM
GASKET
H / W / L [mm]:
105,7 / 191,3 / 240
AVAILABLE COLOURS:
■ ■



ZP160.80.60S
MATERIAL:
ABS/ PC WITH FOAM
GASKET
H / W / L [mm]:
60 / 80 / 160
AVAILABLE COLOURS:
■ ■



ZP180.120.90S
MATERIAL:
ABS/ PC WITH FOAM
GASKET
H / W / L [mm]:
90 / 120 / 180
AVAILABLE COLOURS:
■ ■



ZP180.120.60SU
MATERIAL:
ABS/ PC WITH FOAM
GASKET
H / W / L [mm]:
60,1 / 119,8 / 180
AVAILABLE COLOURS:
■ ■



ZP190.75.75S
MATERIAL:
ABS/ PC WITH FOAM
GASKET
H / W / L [mm]:
75 / 75 / 190
AVAILABLE COLOURS:
■ ■



ZP210.140.45SU
MATERIAL:
ABS/ PC WITH FOAM
GASKET
H / W / L [mm]:
45 / 139,8 / 209,7
AVAILABLE COLOURS:
■ ■



ZP210.140.60S
MATERIAL:
ABS/ PC WITH FOAM
GASKET
H / W / L [mm]:
60,1 / 139,8 / 209,7
AVAILABLE COLOURS:
■ ■

*The product certification process follows certain steps. Not all of the enclosures listed above have physical certification. Some may be in the certification process.



*The product certification process follows certain steps. Not all of the enclosures listed above have physical certification. Some may be in the certification process.



ZIOT-TYPE HERMETIC HOUSINGS



IOT.ZPSET1812.1
MATERIAL:
PC WITH FOAM
GASKET
H / W / L (mm):
60,1 / 121,5 / 180,1
AVAILABLE COLOURS:



IOT.ZPSET1812.2
MATERIAL:
PC WITH FOAM
GASKET
H / W / L (mm):
60,1 / 121,5 / 180,1
AVAILABLE COLOURS:



IOT.ZPSET1510.1
MATERIAL:
PC WITH FOAM
GASKET
H / W / L (mm):
60 / 101,6 / 151,4
AVAILABLE COLOURS:



IOT.ZPSET1510.2
MATERIAL:
PC WITH FOAM
GASKET
H / W / L (mm):
60 / 101,6 / 151,4
AVAILABLE COLOURS:

SET-TYPE HERMETIC HOUSINGS



ZP240.190.105 SET1
MATERIAL:
PC WITH FOAM
GASKET
H / W / L (mm):
105,7 / 191,3 / 240
AVAILABLE COLOURS:



ZP240.190.105 SET2
MATERIAL:
PC WITH FOAM
GASKET
H / W / L (mm):
105,7 / 191,3 / 240
AVAILABLE COLOURS:

* ZP series housings in ABS-PC configuration available only on special request

*The product certification process follows certain steps. Not all of the enclosures listed above have physical certification. Some may be in the certification process.



*The product certification process follows certain steps. Not all of the enclosures listed above have physical certification. Some may be in the certification process.



ZP (WATERPROOF) SERIES HERMETIC HOUSINGS

Kradex ZP series hermetic housings are designed for all devices that require hermetic closure. Available in ABS and PC versions. The cover, with an indentation for a keypad or sticker, can be made of transparent polycarbonate. Both parts of the housing are screwed with captive metric screws.



Mounting plates for assembly inside the housings

The plates are made of 5 mm galvanised steel sheet. They enable various components to be mounted anywhere on the mounting plate. The plates are mounted to the posts in the housing using screws. They make it easy to assemble complex devices consisting of a large number of components outside the housing, and then for mounting such a complex assembly within the housing. This helps in fixing details that do not fit into the spacing of the posts in the housing.



DIN rails

The mounting posts ensure the rail's stable mounting. This makes it possible to install other DIN rail-mounted housings inside the ZP housings.



Hinges

Convenient hinges opening upwards



Mounting brackets

The brackets allow the device to be attached to the wall without opening the cover. This is useful when it is necessary to mount the device in unfavourable conditions (e.g. tropical climate), or with a warranty seal on the housing.



Sets for mounting housings on columns

The set contains: fixing clips, nuts, screws and, depending on index, ZPM rail. The set enables housings to be mounted on columns.



PCBs

Universal mounting plates for soldering electronics.



ZP45.45.40U
MATERIAL:
ABS/PC
H / W / L (mm):
40,1 / 44,8 / 46,1
TWO-PART
AVAILABLE COLOURS:



ZP60.60.40U
MATERIAL:
ABS/PC
H / W / L (mm):
40 / 60 / 60
TWO-PART
AVAILABLE COLOURS:



ZP90.60.40U
MATERIAL:
ABS/PC
H / W / L (mm):
40 / 90 / 60
TWO-PART
AVAILABLE COLOURS:



ZP90.90.45U
MATERIAL:
ABS/PC
WITH GASKET
H / W / L (mm):
45 / 91,6 / 91,4
DOSTĘPNY KOLOR:



ZP90.90.60
MATERIAL:
ABS/PC
WITH GASKET
H / W / L (mm):
60 / 90 / 90
DOSTĘPNY KOLOR:



ZP90.90.60U
MATERIAL:
ABS/PC
WITH GASKET
H / W / L (mm):
60 / 90 / 90
DOSTĘPNY KOLOR:



ZP90.90.75
MATERIAL:
ABS/PC
H / W / L (mm):
75 / 90 / 90
TWO-PART
AVAILABLE COLOURS:



ZP105.105.60
MATERIAL:
ABS/PC
WITH GASKET
H / W / L (mm):
60 / 105 / 105
DOSTĘPNY KOLOR:



ZP105.105.75
MATERIAL:
ABS/PC
WITH GASKET
H / W / L (mm):
74,7 / 105 / 105
DOSTĘPNY KOLOR:



ZP120.80.45U
MATERIAL:
ABS/PC
WITH GASKET
H / W / L (mm):
45,2 / 81,6 / 151,6
DOSTĘPNY KOLOR:



ZP120.80.60U
MATERIAL:
ABS/PC
WITH GASKET
H / W / L (mm):
60,2 / 81,6 / 151,6
DOSTĘPNY KOLOR:



ZP120.80.60
MATERIAL:
ABS/PC
WITH GASKET
H / W / L (mm):
60,2 / 80 / 120
DOSTĘPNY KOLOR:



ZP120.120.60
MATERIAL:
ABS/PC
WITH GASKET
H / W / L (mm):
54,6 / 78,4 / 118,2
DOSTĘPNY KOLOR:



ZP120.80.75
MATERIAL:
ABS/PC
WITH GASKET
H / W / L (mm):
75,2 / 80 / 120
DOSTĘPNY KOLOR:



ZP125.75.37
MATERIAL:
ABS/PC
WITH GASKET
H / W / L (mm):
37,2 / 75 / 125
DOSTĘPNY KOLOR:



ZP135.135.60
MATERIAL:
PC
WITH GASKET
H / W / L (mm):
60,1 / 134,8 / 134,8
DOSTĘPNY KOLOR:



ZP150.100.45U
MATERIAL:
ABS/PC
WITH GASKET
H / W / L (mm):
45 / 100,1 / 150,1
DOSTĘPNY KOLOR:



ZP150.100.60U
MATERIAL:
ABS/PC
WITH GASKET
H / W / L (mm):
60 / 100 / 150
DOSTĘPNY KOLOR:

*The product certification process follows certain steps. Not all of the enclosures listed above have physical certification. Some may be in the certification process.



ZP120.80.45U
MATERIAL:
ABS/PC
WITH GASKET
H / W / L (mm):
45,2 / 81,6 / 151,6
DOSTĘPNY KOLOR:



ZP120.80.60U
MATERIAL:
ABS/PC
WITH GASKET
H / W / L (mm):
60,2 / 81,6 / 151,6
DOSTĘPNY KOLOR:



ZP120.80.60
MATERIAL:
ABS/PC
WITH GASKET
H / W / L (mm):
60,2 / 80 / 120
DOSTĘPNY KOLOR:



ZP120.120.60
MATERIAL:
ABS/PC
WITH GASKET
H / W / L (mm):
54,6 / 78,4 / 118,2
DOSTĘPNY KOLOR:



ZP120.80.75
MATERIAL:
ABS/PC
WITH GASKET
H / W / L (mm):
75,2 / 80 / 120
DOSTĘPNY KOLOR:



ZP125.75.37
MATERIAL:
ABS/PC
WITH GASKET
H / W / L (mm):
37,2 / 75 / 125
DOSTĘPNY KOLOR:



ZP135.135.60
MATERIAL:
PC
WITH GASKET
H / W / L (mm):
60,1 / 134,8 / 134,8
DOSTĘPNY KOLOR:



ZP150.100.45U
MATERIAL:
ABS/PC
WITH GASKET
H / W / L (mm):
45 / 100,1 / 150,1
DOSTĘPNY KOLOR:



ZP150.100.60U
MATERIAL:
ABS/PC
WITH GASKET
H / W / L (mm):
60 / 100 / 150
DOSTĘPNY KOLOR:

*The product certification process follows certain steps. Not all of the enclosures listed above have physical certification. Some may be in the certification process.



ZP150.100.60
MATERIAL:
ABS/PC
WITH GASKET
H / W / L (mm):
60 / 100,1 / 150,1
AVAILABLE COLOURS:
■ ■



ZP150.100.75
MATERIAL:
ABS/PC
WITH GASKET
H / W / L (mm):
75 / 100 / 150
AVAILABLE COLOURS:
■ ■



ZP150.150.60
MATERIAL:
ABS/PC
WITH GASKET
H / W / L (mm):
60 / 149,9 / 149,9
AVAILABLE COLOURS:
■ ■



ZP160.80.60
MATERIAL:
ABS/PC
WITH GASKET
H / W / L (mm):
60 / 80 / 160
AVAILABLE COLOURS:
■ ■



ZP180.120.90
MATERIAL:
ABS/PC
WITH GASKET
H / W / L (mm):
90,3 / 120,1 / 180,1
AVAILABLE COLOURS:
■ ■



ZP190.75.75
MATERIAL:
ABS/PC
WITH GASKET
H / W / L (mm):
75 / 75 / 190
AVAILABLE COLOURS:
■ ■



ZP210.140.45U
MATERIAL:
ABS/PC
WITH GASKET
H / W / L (mm):
45 / 140 / 210
AVAILABLE COLOURS:
■ ■



ZP210.140.60
MATERIAL:
ABS/PC
WITH GASKET
H / W / L (mm):
60,1 / 139,8 / 209,7
AVAILABLE COLOURS:
■ ■



ZP240.190.105
MATERIAL:
ABS/PC
WITH GASKET
H / W / L (mm):
105,7 / 191,3 / 240
AVAILABLE COLOURS:
■ ■

ACCESSORIES FOR WATERPROOF ZP LINE HERMETIC HOUSINGS

ZMB mounting plates for
hermetic housings



TZ rails for hermetic series housings



Hinges/Latches



Mounting brackets



Set for mounting ZP series housings on columns



* more information on the website

*The product certification process follows certain steps. Not all of the enclosures listed above have physical certification. Some may be in the certification process.



DIN-R SERIES MODULAR HOUSINGS FOR DIN RAIL

A new series of housings for a DIN rail based on a modern design of replaceable masking frames, facilitating adjustments to the various requirements used inside the electronics.



the possibility to individually adjust the body, the base and the connector masks, giving the opportunity to choose from several dozen variants



product version: 6M, 9M and 10M

ABS V0

ABS V0 plastic



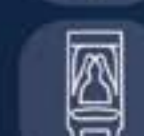
the possibility to install 3 PCBs vertically and horizontally



mounting on a rail with 3 latches, ensuring easy insertion and removal from the housing



protection against falling out, without additional metal elements



convenient hinges that open up upward



ZD1005
MATERIAL:
ABS V0
H/ W / L (mm):
65 / 90 / 90
AVAILABLE COLOURS:



ZD1006
MATERIAL:
ABS V0
H/ W / L (mm):
65,2 / 90 / 107
AVAILABLE COLOURS:



ZD1008
MATERIAL:
ABS V0
H/ W / L (mm):
65 / 90 / 143
AVAILABLE COLOURS:



ZD1009
MATERIAL:
ABS V0
H/ W / L (mm):
65,3 / 89,8 / 159,8
AVAILABLE COLOURS:



ZD1010
MATERIAL:
ABS V0
H/ W / L (mm):
65,3 / 89,8 / 177,8
AVAILABLE COLOURS:



ZD1012
MATERIAL:
ABS V0
H/ W / L (mm):
65 / 90 / 214
AVAILABLE COLOURS:

ACCESSORIES FOR DIN-R SERIES MODULAR HOUSINGS FOR DIN RAIL

Filter for DIN-R series housings



Masking frames



* more information on the website



MODULAR HOUSINGS FOR DIN RAIL

Modular housings for DIN rail – these are suitable for DIN rail mounting. They are available in light grey and black. The products are made of the following materials: polystyrene, ABS, and ABS V0 (self-extinguishing).



Material
ABS/ ABS V0
PS



Variant
WITHOUT GASKET



Colour
LIGHT GREY
BLACK



IP rating of
IP40



Accessories
BLACK CLIP





Z100
MATERIAL:
PS/ ABS VO
H / W / L [mm]:
64,7 / 69,7 / 89,3
AVAILABLE COLOURS:
■ ABS VO ■ PS/ ABS VO



Z101
MATERIAL:
PS/ ABS VO
H / W / L [mm]:
65,6 / 89 / 107
AVAILABLE COLOURS:
■ ABS VO ■ PS/ ABS VO



Z102
MATERIAL:
PS/ ABS VO
H / W / L [mm]:
65,2 / 53,4 / 89,4
AVAILABLE COLOURS:
■ ABS VO ■ PS/ ABS VO



Z103
MATERIAL:
PS/ ABS VO
H / W / L [mm]:
62,8 / 34,4 / 88,8
AVAILABLE COLOURS:
■ ABS VO ■ PS/ ABS VO



Z104
MATERIAL:
PS/ ABS VO
H / W / L [mm]:
62,8 / 88,8 / 138,8
AVAILABLE COLOURS:
■ ABS VO ■ PS/ ABS VO



Z105
MATERIAL:
PS/ ABS VO
H / W / L [mm]:
64,9 / 17,5 / 90
AVAILABLE COLOURS:
■ ABS VO ■ PS/ ABS VO



Z106
MATERIAL:
PS/ ABS VO
H / W / L [mm]:
65 / 35,2 / 90,1
AVAILABLE COLOURS:
■ ABS VO ■ PS/ ABS VO



Z107
MATERIAL:
PS/ ABS VO
H / W / L [mm]:
65 / 52,5 / 90
AVAILABLE COLOURS:
■ ABS VO ■ PS/ ABS VO



Z108
MATERIAL:
PS/ ABS VO
H / W / L [mm]:
65 / 70 / 90
AVAILABLE COLOURS:
■ ABS VO ■ PS/ ABS VO



Z109
MATERIAL:
PS/ ABS VO
H / W / L [mm]:
65,1 / 87,5 / 90
AVAILABLE COLOURS:
■ ABS VO ■ PS/ ABS VO



Z110
MATERIAL:
PS/ ABS VO
H / W / L [mm]:
65,3 / 90 / 105
AVAILABLE COLOURS:
■ ABS VO ■ PS/ ABS VO

* Filters for Z100, Z101, Z105, Z106, Z107, Z108, Z109, Z110 enclosures available in other colors from the distributor. More information on the website.



HERMETIC HOUSINGS

Hermetic housings with gaskets - one of the most rapidly developing product categories. Available in versions with or without gaskets, with brass sleeves and in various colours: light grey, transparent, and with transparent top and light grey bottom.

HIGH QUALITY OF KRADEX PRODUCTS



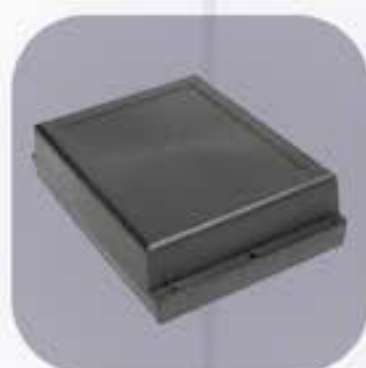
We make those housings out of polystyrene or ABS.



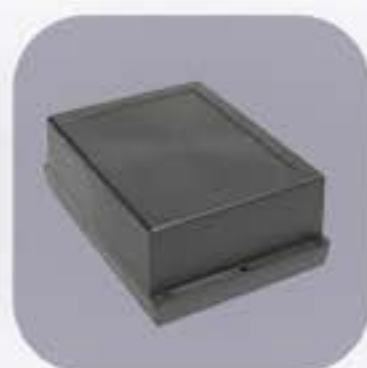
Most of the products have an IP65 rating, as well as IK07 and IK09 certification.



This series of housings is ideal for use in a humid environment.



Z46
MATERIAL:
PS/ ABS
WITH GASKET
H / W / L (mm):
52,6 / 144,6 / 197,8
AVAILABLE COLOURS:
■ ■



Z46A
MATERIAL:
PS/ ABS
WITH GASKET
H / W / L (mm):
72,3 / 144,7 / 198,1
AVAILABLE COLOURS:
■ ■



Z54
MATERIAL:
PS/ ABS
WITH GASKET
H / W / L (mm):
41 / 74,5 / 89,4
AVAILABLE COLOURS:
■ ■



Z56
MATERIAL:
PS/ ABS
WITH GASKET
H / W / L (mm):
41,7 / 64,3 / 88,2
AVAILABLE COLOURS:
■ ■



Z57
MATERIAL:
PS/ ABS
WITH GASKET
H / W / L (mm):
54,6 / 78,4 / 118,2
AVAILABLE COLOURS:
■ ■



Z58
MATERIAL:
PS/ ABS
WITH GASKET
H / W / L (mm):
54,9 / 82,2 / 158,2
AVAILABLE COLOURS:
■ ■



Z59
MATERIAL:
PS/ ABS
WITH GASKET
H / W / L (mm):
58,1 / 115,4 / 125,3
AVAILABLE COLOURS:
■ ■



Z65
MATERIAL:
PS/ ABS
WITH GASKET
H / W / L (mm):
30,1 / 40,1 / 64,4
AVAILABLE COLOURS:
■ ■



Z74
MATERIAL:
PS/ ABS
WITH GASKET
H / W / L (mm):
55,7 / 126 / 176,8
AVAILABLE COLOURS:
■ ■



Z90
MATERIAL:
PS/ ABS
WITH GASKET
H / W / L (mm):
79,8 (81,3) / 174,8 / 225
AVAILABLE COLOURS:
■ ■



Z95
MATERIAL:
PS/ ABS
WITH GASKET
H / W / L (mm):
95,5 (96,7) / 193,2 / 283
AVAILABLE COLOURS:
■ ■



Z96
MATERIAL:
PS/ ABS
WITH GASKET
H / W / L (mm):
36,8 / 50 / 70
AVAILABLE COLOURS:
■ ■



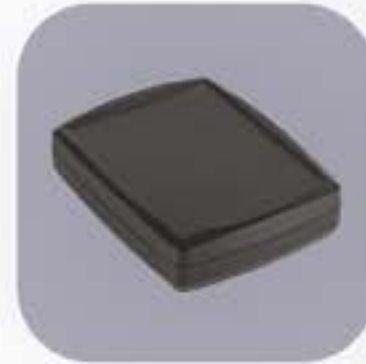
Z11
MATERIAL:
PS/ ABS
WITH GASKET
H / W / L (mm):
55 / 80 / 82
AVAILABLE COLOURS:
■ ■



Z116
MATERIAL:
PS/ ABS
WITH GASKET
H / W / L (mm):
36,2 / 48,9 / 51
AVAILABLE COLOURS:
■ ■



Z117
MATERIAL:
PS/ ABS
WITH GASKET
H / W / L (mm):
36,7 / 57,1 / 63,2
AVAILABLE COLOURS:
■ ■



Z124
MATERIAL:
ABS
WITH GASKET
H / W / L (mm):
38,5 / 144,6 / 184,7
AVAILABLE COLOURS:
■ ■ ■



Z128U
MATERIAL:
PC
WITH GASKET
H / W / L (mm):
40 / 70 / 105
AVAILABLE COLOURS:
■ ■



Z128
MATERIAL:
PS/ ABS
WITH GASKET
H / W / L (mm):
40 / 70 / 105
AVAILABLE COLOURS:
■ ■

*Product certification process takes place in specific stages. Not all of the enclosures listed above have physical certification. Some of them may be in the certification process.

*Product certification process takes place in specific stages. Not all of the enclosures listed above have physical certification. Some of them may be in the certification process.

ACCESSORIES FOR ALL HERMETIC HOUSINGS

H-type cast gaskets



COUNTRIES WHERE YOU CAN FIND OUR PRODUCTS



- Poland
- Slovakia
- Czech Republic
- Ukraine
- Lithuania
- Hungary
- Romania
- Serbia
- Germany
- Italy
- Netherlands
- United Kingdom
- Spain
- Greece
- Georgia



KRADEX SUPPORTS ECOLOGY

by including it in its development strategy

CONSUMPTION OF FUELS AND ENERGY

Kradex is one of the first companies to invest in photovoltaics.

Our aim is to minimise our impact on the natural environment at every stage of production by successfully introducing ecological solutions to our company.

BY ORDERING OUR PRODUCTS YOU CONTRIBUTE TO SUSTAINABLE DEVELOPMENT

type of fuels	CO ₂ [Mg/MWh]	CO _x [Mg/MWh]	NO _x [Mg/MWh]	total dust [Mg/MWh]
hard coal	0,818	0,000581	0,000655	0,000033
lignite	1,09	0,000775	0,000873	0,000044
natural gas	0,454	0,000323	0,000364	0,000018
biomass	0,31	0,00001	0,00019	0,00001
other	0,363	0,000258	0,000291	0,000015
total	0,2908054	0,0002068	0,0002328	0,000012

We obtain more than 15% of our energy from our own photovoltaic installations.

NOTEBOOK

NOTEBOOK



NOTEBOOK

NOTEBOOK



NOTEBOOK

CONTACTS



Order Handling Department

kradex@kradex.com.pl
 (+48 22) 613-08-88
 (+48 22) 812-10-68



Enquiries, Offers and Terms of Cooperation Department

jaroslaw.owczarek@kradex.com.pl
 (+48) 695-510-500
 (+48 22) 613-08-88



Milling and Personalisation Department

michal.drzazgowski@kradex.com.pl
 (+48 22) 613-08-88 wew. 3



Special Products Department

lukasz.kowalczyk@kradex.com.pl
 (+48 22) 613-08-88 wew. 2



Marketing Department

marketing@kradex.com.pl
 (+48 22) 613-08-88
 (+48) 794-140-617



KRADEX Sp. z o.o.
ul. Minerska 4,
04-506 Warszawa
NIP: 952 218 79 30
www.kradex.com.pl

